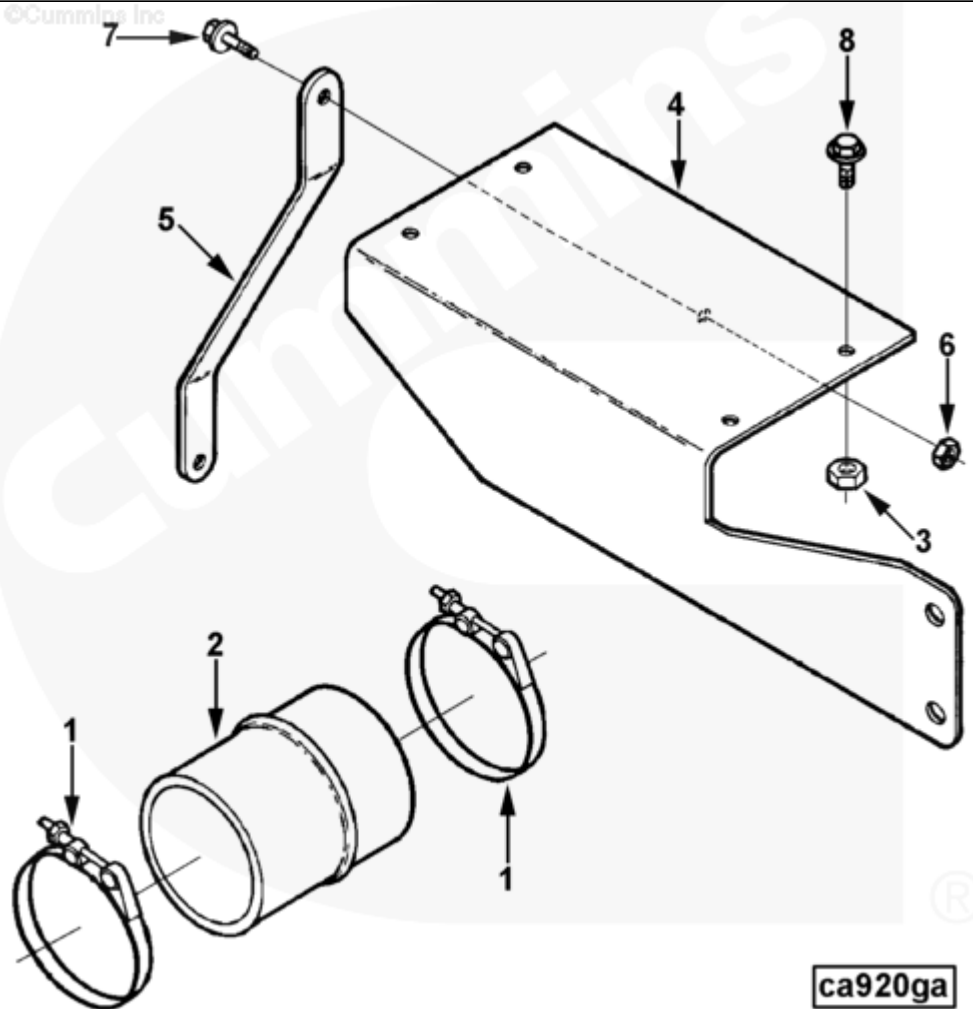




# Parts Catalog - Option Detail

Electronic Parts Catalog - Option Detail				
Option	Group	Graphic	Film Card	Date
CA9033	10.04.2	ca920ga	Z	07-DEC-92
<b>Engines</b>	6C8.3, C GAS PLUS CM556, G8.3, G8.3 CM558, GTA8.3 CM558, ISC CM2150, ISC CM554, ISC CM850, ISC8.3 CM2250, ISC8.3 G CM2180 C101, ISL CM2150, ISL CM554, ISL CM850, ISL G CM2180, ISL8.9 CM2150 L110, ISL8.9 CM2880 L112, ISL9 CM2150 SN, ISL9 CM2250, ISL9 CM2350 L101, ISL9 CM2350 L111, ISLE4 CM850, L GAS PLUS CM556, L8.9, L8.9 L121, L8.9G CMOH2.0 L125B, L9 CM2350 L116B, L9 CM2350 L119B, L9 CM2350 L120C, L9 CM2350 L123B, L9.3 L105, L9.5 L117, L9N CM2380 L124B, QSC8.3 CM2250, QSC8.3 CM2880 C102, QSC8.3 CM554, QSC8.3 CM850(CM2850), QSL9 CM2250, QSL9 CM2250 L115, QSL9 CM2350 L102, QSL9 CM2350 L107, QSL9 CM2350 L118, QSL9 CM2350 L122, QSL9 CM554, QSL9 CM850(CM2850), QSL9 G CM558, QSL9 M CM2250 L106, QSL9.3 CM2880 L113			



SMALL | MEDIUM | LARGE

Cart	Ref No	Part Number	Part Description	Required	Remarks
<a href="#">View My Cart</a>					
		CA9033	Air Cleaner Plumbing		

					Engine Family:
					C Series
					Type of Hose: Hump
					Size to Size: 4in. to 4in.
					Hose Length (mm): 127.00
					Hose Material: 25,002
					Temp Limit (Deg C): -50/+125
					Clamp Supplier: Cummins
					Aspiration:
					Turbocharged
					Jacket Water Aftercooled
<input type="checkbox"/>	1	<a href="#">140312</a>	T-Bolt Clamp	2	4 5/8 in.
<input type="checkbox"/>	2	<a href="#">3030788</a>	Hump Hose	1	
<input type="checkbox"/>	3	<a href="#">3044360</a>	Regular Hexagon Nut	4	M10 x 1.50
<input type="checkbox"/>	4	<a href="#">3353286</a>	Air Cleaner Bracket	1	
<input type="checkbox"/>	5	<a href="#">3353287</a>	Air Cleaner Brace	1	
<input type="checkbox"/>	6	<a href="#">3900240</a>	Regular Hexagon Nut	1	M8 X 1.25.
<input type="checkbox"/>	7	<a href="#">3900630</a>	Hexagon Flange Head Cap Screw	2	M8 X 1.25 X 20
<input type="checkbox"/>	8	<a href="#">3902460</a>	Hexagon Flange Head Cap Screw	4	M10 X 1.50 X 25.